

V Vacant Plots for Allotment
P Plots Under Production
D Plots Under Dispute

THE REVISION (33/11 KV 655) HAS BEEN APPROVED BY CMD VIDE PARA 89/N ON DATED 5-7-2003 IN SECTION FILE AS PER SR.RM NOTE ON DATED 26-6-2003 IN SECTION FILE REVISED PORTION SHOWN AS

NOTE:- THE PART AREA SHOWN THIS MODIFIED BY UNIT OFFICE AND DULY AUTHENTICATED BY SR.RM-ON DATED 26-8-03 HAS BEEN INCORPORATED THE LAY OUT PLAN.

NOTE:- THE REVISION HAS BEEN APPROVED BY CMD VIDE PARA 136/N ON DATED 15-11-2003 AS PER SR.RM. NOTE ON DATED 1-11-2003 IN SECTION FILE. REVISED AREA SHOWN THIS

SCHEDULE OF PLOTS

TYPE	SIZE IN METERS	AREA IN SQM.	NOS	SET BACKS			
				FRONT	SIDE	REAR	REAR
B	80.0X100.0	8,000	14	12.00	6.00	6.00	6.00
D	50.0X100.0	5,000	4	8.00	5.00	5.00	5.00
E	50.0X80.0	4,000	24	8.00	4.00	4.00	4.00
F	30.0X65.0	2,000	84	5.00	3.00	3.00	3.00
G	30.0X50.0	1,500	31	5.00	3.00	3.00	3.00
G ₁	25.0X40.0	1,000	6	5.00	3.00	-	2.50
H	20.0X35.0	700	30	4.00	3.00	-	1.20
H ₁	20.0X25.0	500	33	3.00	3.00	-	1.20
TOTAL NOS.OF			178				

LAND USE

LAND USE	AREA
TOTAL AREA UNDER SCHEME	142.56 ACRES
IND. PLOTS	97.70 "
ROADS	30.21 "
COMMERCIAL	1.67 "
SERVICES	2.37 "
GREEN BUFFER	6.28 "
OPEN	1.95 "
FUTURE EXP	1.24 "
RESERVED	1.14 "

NOTE:-

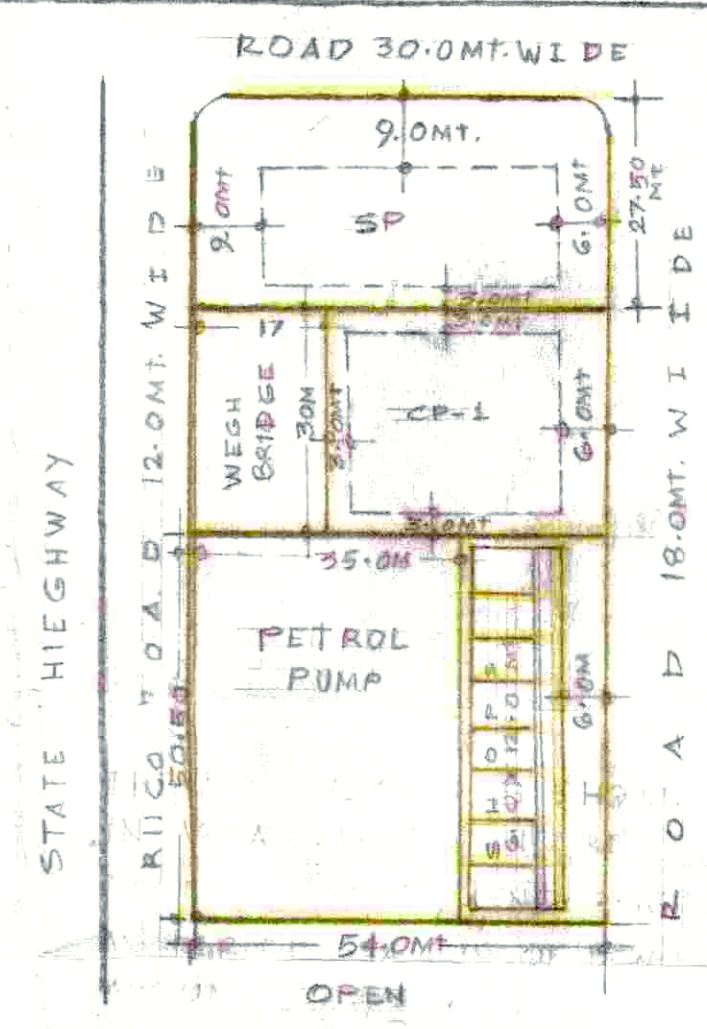
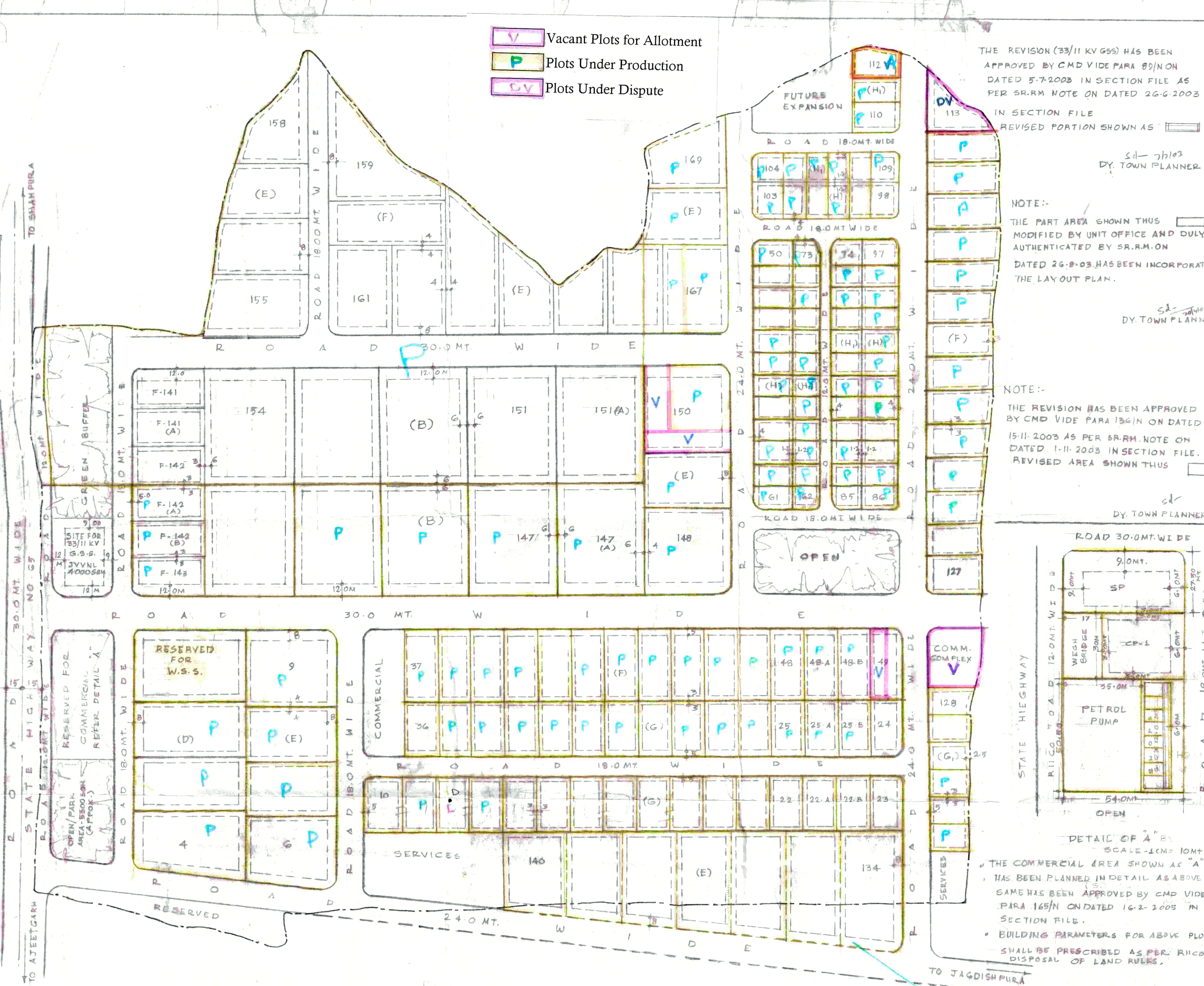
- THIS DRAWING SUPERCEDES THE DRG NO IP/943/2000 DT. 14/09/2000.
- THE FOLLOWING PLOTS ARE ADDITIONAL PLOTS IN VACANT LAND DUE TO SHIFTING OF INDUSTRIAL BLOCKS FROM 150MT TO 100MT FROM CENTER LINE OF STATE HIGHWAY G-22(A), 25(B), G-22(A), 22(B), F-48(A), 48(B), B-147(A), 151(A).
- PLOT NO E-134 TO E-140 MAY BE DEVELOPED AFTER LAND ACQUISITION PROPOSED BY UNIT TOWARDS WEST SIDE OF INDL. AREA.
- THIS DRAWING HAS BEEN APPROVED BY MD VIDE PARA 66/N ON DATED 24/09/2002 AS PER SR.RM LETTER ON DATED 25/9/2002.

TRACED BY:
 (M.P. SINGH) SR. D/MAN

(R.K. GOYAL) ARM
 (R.K. MEHRA) SR. REG. MANAGER

TENTATIVE LAY OUT PLAN OF INDUSTRIAL AREA AJEETGARH DISTT. SIKAR

SCALE:- 1CM = 20MT.	DRG. NO. IP/1200/2002 DT. 24/09/2002
(VISHAL MATHUR) DRAUGHTSMAN	REV-I IP/21/2003 DT. 11-7-2003. REV-II IP/14/2003 DT. 24-9-2003. REV-III IP/74/2003 DT. 17-11-2003 REV-IV IP/131/2005 DT. 19-2-2005
(SANJAY M. BAGHMARE) ASSTT. TOWN PLANNER	
(PRAVEEN JAIN) DY. TOWN PLANNER	



THE COMMERCIAL AREA SHOWN AS "A" HAS BEEN PLANNED IN DETAIL AS ABOVE SAME HAS BEEN APPROVED BY CMD VIDE PARA 169/N ON DATED 16-2-2005 IN SECTION FILE.

BUILDING PARAMETERS FOR ABOVE PLOTS SHALL BE PRESCRIBED AS PER R.I.C.O DISPOSAL OF LAND RULES.

(DY. TOWN PLANNER)